



**APPLIED MEASUREMENTS LTD.**  
Transducer Specialists...

+44 (0) 118 981 7339

[info@appmeas.co.uk](mailto:info@appmeas.co.uk)

<https://appmeas.co.uk>

## ET24 Wireless Telemetry Lift Link Tension Load Cell System

### Key Features:

- Capacities From 1 tonne to 500 tonnes
- Wireless Range up to 700 Metres
- Accuracy  $<\pm 0.3\%$  of Rated Capacity
- IP65 Environmental Protection
- High Resolution T24-HS Display
- Extreme Battery Life: 600 Hours (Load Cell) 40 Hours (Handheld)
- Low Weight to Capacity Ratio
- Remote Power On/Off
- Ability to use Multiple Link Load Cells and Sum Their Readings to Monitor Total Load (optional)
- Internal Antenna
- Includes Carry Case (75 tonnes and below) / Storage Crate (100 tonnes and above)
- Fast Delivery



*For wireless high resolution tension monitoring at distances up to 700 metres*

The high accuracy ET24 telemetry lift link load cells are designed for under-hook and lifting gear weighing applications. Manufactured from aluminium gives this load cell a fantastic low weight to capacity ratio. This telemetry system allows for wireless monitoring of up to 700 metres, avoiding the need for excess cabling.

The telemetry lift link's batteries will last up to 600 hours and the handheld display's will last up to 40. The antenna is internally mounted resulting in less chance of breakage.

The ET24 can be used on its own or with up to 100 load cells simultaneously for a multi-point measuring system. The handheld indicator can display the outputs of up to 12 telemetry load cells. By downloading the T24Log100 software you can log up to 100 channels of data.

### Options:

- USB Base Station for PC-Based Monitoring & Data Logging
- Analogue Output Module
- Multi-Channel Monitoring and Data Logging Software
- Remote Printer
- Lifting Shackles

### Applications:

- Lifting Gear Weighing
- Cable Tension Measurement
- In-line Weighing Applications
- Crane Monitoring
- Under-Hook Crane Weighing
- Towing Force Monitoring
- In-Line Tension Measurement

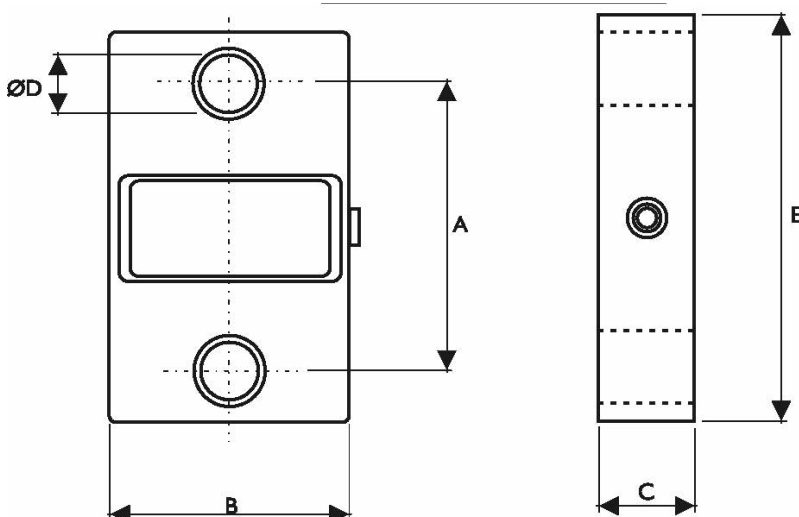


## Specification:

Rated Capacity (RC):	T	0-1, 0-2.5, 0-6.5, 0-12, 0-25, 0-35, 0-55, 0-75, 0-100, 0-150, 0-200, 0-250, 0-300, 0-500
Operating Modes	Tension Only	
Accuracy:	% of Rated Capacity	<±0.3
Operating Temperature Range:	°C	-10 to +50
Safe Overload:	% of Rated Capacity	150
Ultimate Overload:	% of Rated Capacity	500 (up to 75t) / 400 (100t to 300t)
IP Rating (Environmental Protection):		IP65
Construction Material:		Aluminium Alloy
Power Requirements:		Handheld: 2 x AA Battery / Load Cell: 4 x AA Battery
Display Type:		7 Digit 8.8mm LCD
Transmission Range:		700 metres (line of sight)
Display Update Rate:		3 per second

## Dimensions (mm):

RANGE	A	B	C	ØD	E	WEIGHT	RESOLUTION	Safety Factor
0-1t	146	104	43	24.5	204	1.5kg	0.5kg	12:1
0-2.5t	146	104	43	24.5	204	1.5kg	0.001te	7:1
0-6.5t	165	113	43	38	249	2.4kg	0.001te	7:1
0-12t	193	113	47	47.5	305	3.7kg	0.002te	7:1
0-25t	215	115	60	55	340	5kg	0.005te	5:1
0-35t	225	126	75	60	393	8.6kg	0.005te	5:1
0-55t	230	180	75	76	424	13kg	0.01te	5:1
0-75t	260	202	75	76	470	16kg	0.01te	5:1
0-100t	320	255	99	109	608	34kg	0.05te	5:1
0-150t	360	303	99	109	670	46kg	0.05te	4:1
0-200t	350	350	144	145	700	82kg	0.1te	5:1
0-250t	350	350	144	145	700	82kg	0.1te	4:1
0-300t	350	426	150	160	806	118kg	0.1te	5:1
0-500t	450	570	150	200	930	248kg	0.1te	5:1





**APPLIED MEASUREMENTS LTD.**  
Transducer Specialists...

+44 (0) 118 981 7339

[info@appmeas.co.uk](mailto:info@appmeas.co.uk)

<https://appmeas.co.uk>

## Ordering Codes:

Part Number	Description
ET24-1t-000-000	1 tonne link load cell, T24-HS display + carry case
ET24-2.5t-000-000	2.5 tonne link load cell, T24-HS display + carry case
ET24-6.5t-000-000	6.5 tonne link load cell, T24-HS display + carry case
ET24-12t-000-000	12 tonne link load cell, T24-HS display + carry case
ET24-25t-000-000	25 tonne link load cell, T24-HS display + carry case
ET24-35t-000-000	35 tonne link load cell, T24-HS display + carry case
ET24-55t-000-000	55 tonne link load cell, T24-HS display + carry case
ET24-75t-000-000	75 tonne link load cell, T24-HS display + carry case
ET24-100t-000-000	100 tonne link load cell, T24-HS display + carry case
ET24-150t-000-000	150 tonne link load cell, T24-HS display + carry case
ET24-200-000-000	200 tonne link load cell, T24-HS display + carry case
ET24-250t-000-000	250 tonne link load cell, T24-HS display + carry case
ET24-300t-000-000	300 tonne link load cell, T24-HS display + carry case
ET24-500t-000-000	500 tonne link load cell, T24-HS display + carry case

## Associated Case Study:



### [Telemetry Lift Link Load Cells Tip the Scales for Plaxton Bus](#)

A multi-channel system was set up using two ET24-5T and two ET24-12T telemetry lift link load cells, two inclinometers (angle sensors) and a T24-BSu base station. ET24 telemetry load cells were attached to each corner of the bus to monitor the load and the two inclinometers were used to measure the incline. Once the bus was lifted, instantaneous measurements were picked-up by a T24-BSu wireless telemetry base station and the data was transmitted straight to the PC or laptop. [Read more...](#)

## Associated Products:



[T24 Wireless Telemetry Range](#)