

ULYS TD80/TT ETHERNET

Submeters



Compact, simple, innovative solution for processing your energy consumption data any way you wish

For three-phase networks: direct connection or via a CT

A full range of functions in 4 DIN modules

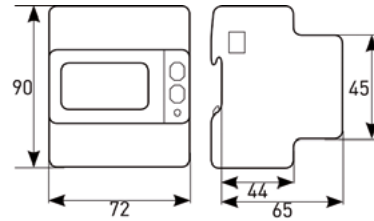
Time/date-stamped recordings and automatic transmission of the data to an FTP server

Comprehensive access to the data (front panel / integrated web pages, Modbus TCP)

Specifications

	ULYS TD80 Ethernet	ULYS TT Ethernet
Current input		
Type	Direct 80 A	On TC 1 or 5 A
Voltage input		
Rated voltage	3 x 230/400 Vac... 3 x 240/415 Vac (± 20 %)	
Consumption	7.5 VA max. per phase	
Rated frequency	50/60 Hz	
Pulse output		
Number	1 configurable for Ea, Eq or Es	
Weight	100 pulses/kWh, /kVarh, /kVAh	Automatic adjustment according to CT ratio
Accuracy		
Active energy	Class 1 according to IEC 62053-21 MID Class B according to EN 50470-1-3	
Reactive energy	Class 2 according to IEC 62053-23	
Communication		
Ethernet	IEEE 802.3 standard, Modbus TCP protocol, HTTP, NTP, DHCP integrated web pages	
Recording		
Number of variables	Up to 85 variables	
Periodicity	Adjustable from 10 s to 60 min	
Storage capacity	Up to several years of recordings	
Mechanical specifications		
Format	4 DIN modules	
Mounting	On 35 mm ² DIN rail	
Connection	35 mm ² screw terminal block	6 mm ² screw terminal block
Ingress protection	IP51 on front panel	
Environment		
Operating temperature	-25 °C to +55 °C	
Storage temperature	-25 °C to +75 °C	
Relative humidity	Max. 80 % without condensation	

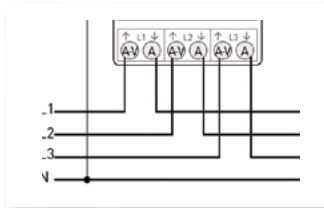
Dimensions (mm)



Electrical connections

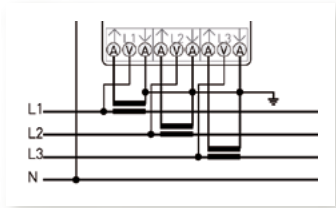
ULYS TD80 Ethernet

Direct
4 wires, 3 currents
All models



ULYS TT Ethernet

On CT
4 wires - 3 CTs
All models



To order

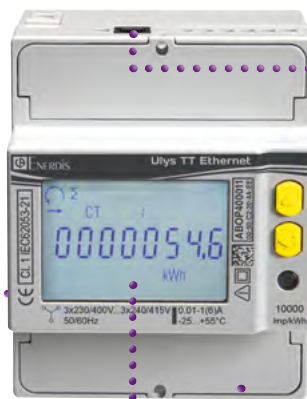
Model	Certification	Reference
ULYS TD80 Ethernet	CEI	P01331038
ULYS TD80-M Ethernet	MID	P01331040
ULYS TT Ethernet	CEI	P01331039
ULYS TT-M Ethernet	MID	P01331041

From simplified access to your data...

...to integration in a more sophisticated system

Integrated web pages for setting your recording parameters, resetting the partial meters to zero, viewing all the electrical parameters remotely and downloading your data in the standard .csv format.

Optimized local real-time display of your network's electrical variables: 4-quadrant energy indices, total, partial, Pt, Qt, St, 3P, 3Q, 3S, FP, F, 3U, 3V, 3I, In



Easy integration in your existing Ethernet network without additional investment for processing via Modbus/TCP or in your web browser.

Synchronization on NTP server to guarantee reliable absolute time/date-stamping by each of the meters.

The Push FTP function can be used for periodic automatic **transmission of your data** to the FTP server of your choice (in standard .csv format) **without logging in.**

This means that you eliminate incoming accesses to your network.

FRANCE
ENERDIS
16, rue Georges Besse - Silic 44
92182 ANTONY Cedex
Tel: +33 1 75 60 10 30
Fax: +33 1 46 66 62 54
export@enerdis.fr
www.enerdis.fr

UNITED KINGDOM
CHAUVIN ARNOUX LTD
Unit 1 Nelson Ct, Flagship Sq, Shaw Cross Business Pk
Dewsbury, West Yorkshire - WF12 7TH
Tel: +44 1924 460 494
Fax: +44 1924 455 328
info@chauvin-arnoux.co.uk
www.chauvin-arnoux.com

MIDDLE EAST
CHAUVIN ARNOUX MIDDLE EAST
P.O. BOX 60-154
1241 2020 JAL EL DIB - LEBANON
Tel: +961 1 890 425
Fax: +961 1 890 424
camie@chauvin-arnoux.com
www.chauvin-arnoux.com

 **CHAUVIN
ARNOUX**
GROUP