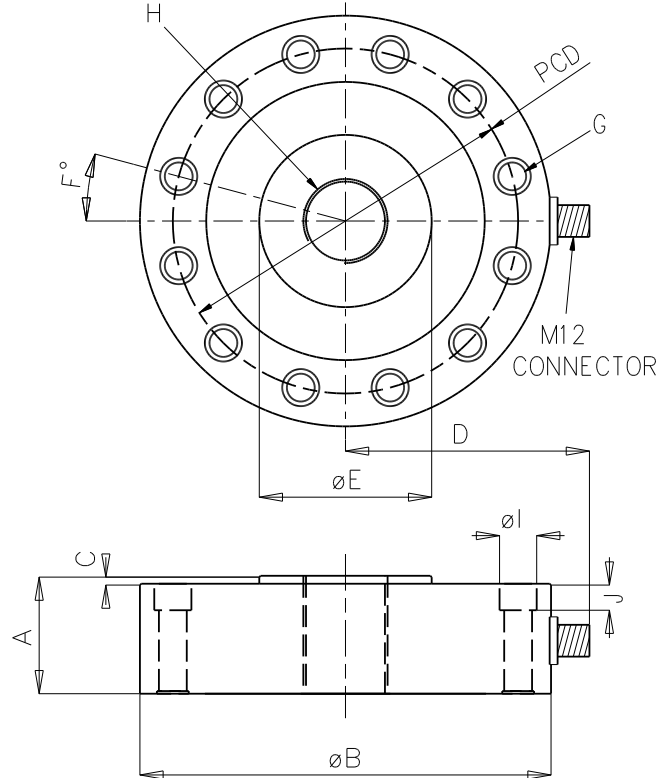


LPCH

UNIVERSAL TENSION/COMPRESSION

High accuracy alloy steel construction
Ideal for materials testing, overhead and low profile weighing.
Rugged with high overload capacity
Standard mountings-replaces LPC and other market leaders
Recessed holes for flush mounting
Standard IP67 M12 sensor connector



Dimensions

Capacity	Order	A	B	C	D	E	F	G	H	ØI	J	Weight
1t	LPM1000T000XX1	35	105	3	65	32	22.5°	8 Holes Ø7.2 PCD 88.5	5/8"-18UNF	10.5	8.5	1.6
2.5t	LPM2500T000XX1	35	105	3	65	32	22.5°	8 Holes Ø7.2 PCD 88.5	5/8"-18UNF	10.5	8.5	1.6
5t	LPM5000T000XX1	35	105	3	65	32	22.5°	8 Holes Ø7.2 PCD 88.5	5/8"-18UNF	10.5	8.5	1.6
10t	LPM010TT000XX1	44.5	155	3	90	65	15°	12 Holes Ø10.5 PCD 130.2	1-1/4"-12UN	17	10	4.7
25t	LPM025TT000XX1	44.5	155	3	90	65	15°	12 Holes Ø10.5 PCD 130.2	1-1/4"-12UN	17	10	4.7
50t	LPM050TT000XX1	63.5	205	6.5	115	95	11.25°	16 Holes Ø13.5 PCD 165.1	1-3/4"-12UN	20	13	11.7
100t	LPM100TT000XX1	90	280	13	152	125	11.25°	16 Holes Ø17.5 PCD 228.6	2-3/4"-8UN	25	16	29.5

NOTE: dimensions are in mm/kg. LPCH supplied with straight mating connector without cable. Specifications with factory fitted base.

Specifications

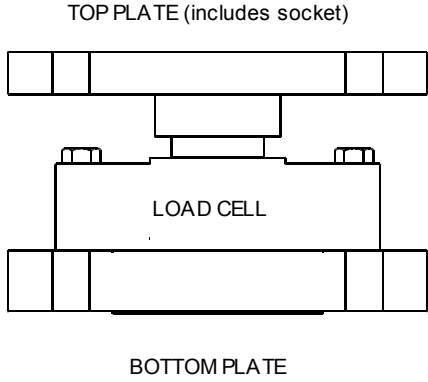
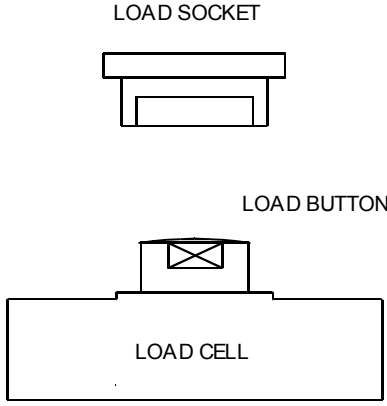
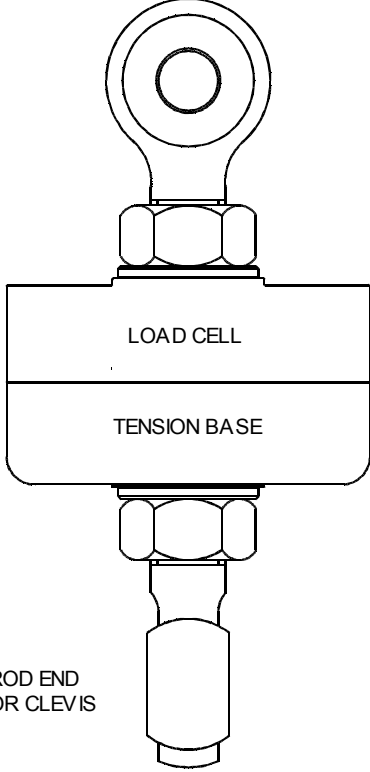
Signal Output at Capacity.....2±0.01 mV/V
Linearity Error.....< 0.020% FSO
Non-Repeatability.....< 0.020% FSO
Combined Error.....< 0.030% FSO
Hysteresis.....< 0.020% FSO
Creep/(30 mins.).....< 0.020% FSO
Zero Balance.....< 2 % Capacity
Temperature Effect on Span(/10C).....< 0.02% FSO
Temperature Effect on Zero(/10C).....< 0.02% FSO
Operating Temperature Range.....-35 ~ 65 C
Compensated Temperature Range.....-10 ~ 50 C
Storage Temperature Range.....-50 ~ 85 C
Excitation +ve.....Pin 1
Excitation -ve.....Pin 2

Service Load.....100% Capacity
Safe Load.....150% Capacity
Safe Side Load.....100% of axial load
Ultimate Load.....300% Capacity
Input Resistance.....750Ω ± 5Ω
Output Resistance.....700Ω ± 3Ω
Insulation Resistance.....> 5000 MΩ (@50 VDC)
Excitation Voltage(Rec).....5~15 V AC/DC
Excitation Voltage(Max.).....20 V AC/DC
Connector.....M12 Sensor type..
Material.....Alloy steel, nickel plated
Sealing.....IP67
Signal +ve.....Pin 4
Signal -ve.....Pin 3

R91020

LPCH ACCESSORIES

PT offers a range of accessories for the LPCH series load cells

Complete Mount	Load Button and Load Socket	Rod Ends and Tension Base																																																								
 <p>TOP PLATE (includes socket)</p> <p>LOAD CELL</p> <p>BOTTOM PLATE</p> <table border="1"> <thead> <tr> <th>Capacity</th> <th>Mount</th> </tr> </thead> <tbody> <tr><td>1t</td><td>M-LPC-5</td></tr> <tr><td>5t</td><td>M-LPC-5</td></tr> <tr><td>10t</td><td>M-LPC-25</td></tr> <tr><td>25t</td><td>M-LPC-25</td></tr> <tr><td>50t</td><td>M-LPC-50</td></tr> <tr><td>100t</td><td>M-LPC-100</td></tr> </tbody> </table> <p>The Load Buttons and Load Sockets are nickel plated tool steel, the mount plates are painted mild steel.</p>	Capacity	Mount	1t	M-LPC-5	5t	M-LPC-5	10t	M-LPC-25	25t	M-LPC-25	50t	M-LPC-50	100t	M-LPC-100	 <p>LOAD SOCKET</p> <p>LOAD BUTTON</p> <p>LOAD CELL</p> <table border="1"> <thead> <tr> <th>Capacity</th> <th>Button</th> <th>Socket</th> </tr> </thead> <tbody> <tr><td>1t~2.5t</td><td>A-LB0.625</td><td>A-LS50</td></tr> <tr><td>5t</td><td>A-LB0.625</td><td>A-LS50</td></tr> <tr><td>10t</td><td>A-LB1.250</td><td>A-LS75</td></tr> <tr><td>25t</td><td>A-LB1.250</td><td>A-LS75</td></tr> <tr><td>50t</td><td>A-LB1.750</td><td>A-LS100</td></tr> <tr><td>100t</td><td>A-LB2.750</td><td>A-LS150</td></tr> </tbody> </table> <p>The Load Buttons and Load Sockets are nickel plated tool steel.</p>	Capacity	Button	Socket	1t~2.5t	A-LB0.625	A-LS50	5t	A-LB0.625	A-LS50	10t	A-LB1.250	A-LS75	25t	A-LB1.250	A-LS75	50t	A-LB1.750	A-LS100	100t	A-LB2.750	A-LS150	 <p>LOAD CELL</p> <p>TENSION BASE</p> <p>ROD END OR CLEVIS</p> <table border="1"> <thead> <tr> <th>Capacity</th> <th>Rod End</th> <th>Base</th> </tr> </thead> <tbody> <tr><td>1t~2.5t</td><td>A-RE0.625-2N</td><td>A-TB-5</td></tr> <tr><td>5t</td><td>A-RE0.625-5N</td><td>A-TB-5</td></tr> <tr><td>10t</td><td>A-RE1.250-10N</td><td>A-TB-25</td></tr> <tr><td>25t</td><td>A-RE1.250-25N</td><td>A-TB-25</td></tr> <tr><td>50t</td><td>A-RE1.750-N</td><td>A-TB-50</td></tr> <tr><td>100t</td><td>A-RE2.750-N</td><td>A-TB-100</td></tr> </tbody> </table> <p>Note: A-RE1.750-N and A-RE2.750-N are clevises. All items are high strength steel, Rod Ends and bolts are zinc/nickel plated and the Tension Base is nickel plated.</p>	Capacity	Rod End	Base	1t~2.5t	A-RE0.625-2N	A-TB-5	5t	A-RE0.625-5N	A-TB-5	10t	A-RE1.250-10N	A-TB-25	25t	A-RE1.250-25N	A-TB-25	50t	A-RE1.750-N	A-TB-50	100t	A-RE2.750-N	A-TB-100
Capacity	Mount																																																									
1t	M-LPC-5																																																									
5t	M-LPC-5																																																									
10t	M-LPC-25																																																									
25t	M-LPC-25																																																									
50t	M-LPC-50																																																									
100t	M-LPC-100																																																									
Capacity	Button	Socket																																																								
1t~2.5t	A-LB0.625	A-LS50																																																								
5t	A-LB0.625	A-LS50																																																								
10t	A-LB1.250	A-LS75																																																								
25t	A-LB1.250	A-LS75																																																								
50t	A-LB1.750	A-LS100																																																								
100t	A-LB2.750	A-LS150																																																								
Capacity	Rod End	Base																																																								
1t~2.5t	A-RE0.625-2N	A-TB-5																																																								
5t	A-RE0.625-5N	A-TB-5																																																								
10t	A-RE1.250-10N	A-TB-25																																																								
25t	A-RE1.250-25N	A-TB-25																																																								
50t	A-RE1.750-N	A-TB-50																																																								
100t	A-RE2.750-N	A-TB-100																																																								

The LPCH is fitted with an industry standard M12 sensor connector with IP67 sealing and is supplied with a straight mating connector. The connector simplifies installation and maintenance and a cable type and length to suit the requirements of the installation can be selected from the cable packs offered by PT. Six wire cables should be installed by connecting the Sense+ with the Excitation+ to terminal 1 and the Sense- with the Excitation- to terminal 2 inside the connector.

PT Cable Packs for the LPCH

Cable Length	5.5mm, 6core PE/PVC foil screened	6.5mm, 6core PE/PU foil screened	7.5mm, 6core PE/PU braid screened
10m	A-6C5.5-0010	A-6C6.5-0010	A-6C7.5-0010
50m	A-6C5.5-0050	A-6C6.5-0050	A-6C7.5-0050
100m	A-6C5.5-0100	A-6C6.5-0100	A-6C7.5-0100
	Standard cable with moisture resistant polyethelene wire insulation and PVC outer sheath.	Improved durability and moisture resistance with polyurethane (PU) outer sheath.	Maximum durability and moisture resistance with extra thick PU sheath and braid screen.