

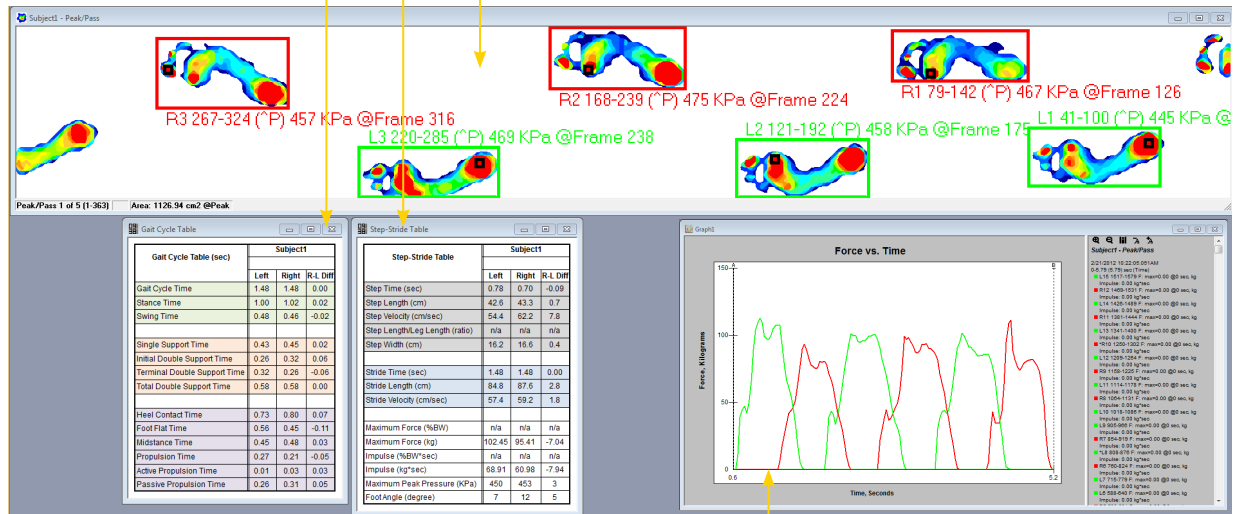
# WALKWAY™ V7.5 SOFTWARE FEATURES

## Human Applications



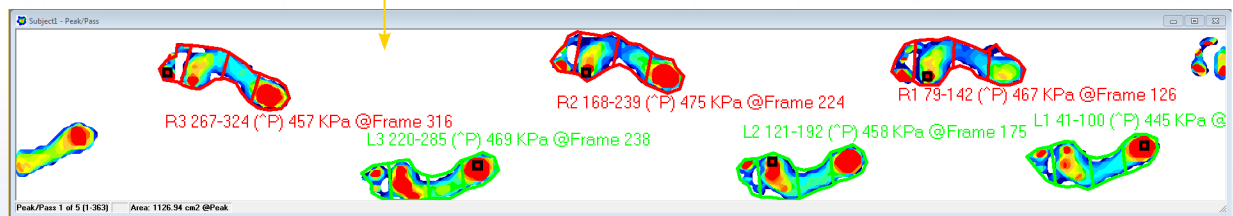
New, more powerful *Walkway V.7.5* software helps you conduct a thorough gait analysis in seconds. The *Tekscan Walkway* is the only system that accurately measures force and pressure AND captures temporospatial gait parameters for multiple footsteps, making it the most complete platform gait analysis system available.

**AUTOMATIC CALCULATION OF GAIT PARAMETERS & DISPLAY IN TABLES:** One click of the mouse generates tables that provide a clear visual display of gait parameters. These tables are also helpful for report generation and printing.



**NEW - 3-SEGMENT FOOT MODEL:** Automatic stance detection, labeling and segmentation for fast and thorough gait analysis.

**GAIT CURVE DISPLAY:** View gait (Force vs. Time) curves to compare load patterns between right and left feet. Additional parameters, including peak pressure, maximum force, Impulse (force over time), and Integral (pressure over time) are available for display.



## ADDITIONAL FEATURES:

- **NEW - Synchronization with Other Devices:** Synchronize the start and stop of data collection with other systems, such as EMG, video or motion capture systems.
- **Save Recordings in Video (\*.AVI) Format:** Easily insert \*.avi files into presentations and share with colleagues.
- **Compare or Average Recordings:** Compare two or more recordings to assess changes before/after treatment or across different cases. Or, average parameters from multiple recordings together to analyze populations.