

**NEW!**

## WIRELESS & DATALOGGER

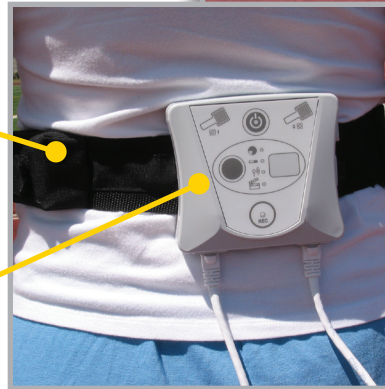
ultimate flexibility in tactile pressure data

Using *VersaTek*<sup>®</sup> Cuffs, the Wireless unit enables wireless transmission of sensor data to the computer. The Datalogger provides storage of the data on the unit itself. Wireless, datalogging, or wireless & datalogging functionality is available depending on your needs.



Battery

Wireless/  
Datalogger Unit

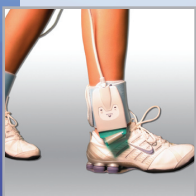


*F-Scan*<sup>®</sup> Wireless

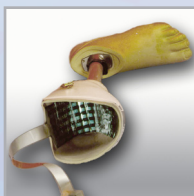
## KEY FEATURES:

- Operate tethered, wireless, or as a datalogger
- Rechargeable Li-Ion battery with up to 2 hours of continuous operation
- Lightweight and compact: Wireless Unit - 190 grams (7 oz); Battery -185 grams (7 oz)
- Membrane switch with visual status indicators
- Scan rate of up to 100 Hz with Wireless connection (Faster speeds available with Datalogger connection)

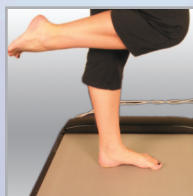
### Available with the following systems:



*F-Scan*<sup>®</sup>



*F-Socket*<sup>™</sup>



*HR Mat*<sup>™</sup>



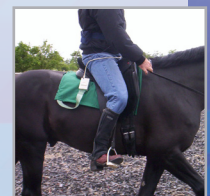
*Grip*<sup>™</sup>



*CONFORMat*<sup>®</sup>



*Hoof*<sup>™</sup>



*Saddle*<sup>™</sup>

# ONE UNIT - THREE CHOICES

wireless • datalogger • wireless & datalogger



## WIRELESS

*VersaTek* Wireless transmits sensor data wirelessly directly from the subject to the computer!

- No wires connecting the subject to the computer for complete freedom of movement
- Sensor data is collected and displayed on the computer in real-time
- The subject can be up to 100 meters away from the computer
- Wireless signal strength indication and automatic buffering if wireless unit moves out of range



## DATALOGGER [coming soon!]

*VersaTek* Datalogger collects and stores sensor data in its internal memory for upload to a computer at a later time.

Data storage and upload is crucial when recording needs to be made over an extended period of time, beyond the battery life of the standard battery, or for applications when the subject might have to travel more than 100 meters from the computer. Datalogger is also important to applications requiring unattended operation or in environments that are not “wireless friendly.”

- No wires connecting the subject to the computer during data collection for complete freedom of movement
- Capture and store up to 8 GB of sensor data
- Includes a removable 8 GB memory card
- Scanning speeds at least 6x greater than Wireless connection

## WIRELESS & DATALOGGER

Purchase both connection options for complete flexibility!

**CONTACT US FOR MORE INFORMATION:**

617.464.4500 • 800.248.3669 • [marketing@tekscan.com](mailto:marketing@tekscan.com) • [www.tekscan.com](http://www.tekscan.com)

