

# F-SCAN<sup>®</sup> IN-SHOE ANALYSIS SYSTEM



Note: Photo includes optional Trigger Transmitter and Trigger Receiver for remote triggering and data synch.

The *F-Scan* is an in-shoe pressure measurement system that provides useful information for diagnosing pathologies, evaluating treatments, and educating patients. *F-Scan* is...

Accurate and reliable – validated by leading researchers for a variety of applications.

Portable – collect data in virtually any environment.

Versatile – integrates with other gait lab technology, like EMG and motion capture systems.

Best-in-class for profiling anatomical landmarks – highest resolution sensors on the market.

Optimized for sports testing – small, lightweight electronics, Wireless and Datalogger options and fast scan rates, so you don't miss a thing.

## Specifications

### SENSORS

	Standard	Sport	XL	Long-Handle
Insole Size	Up to 14 Mens (US)	Up to 14 Mens (US)	Up to 24E Mens (US)	Up to 14 Mens (US)
Thickness	0.007 in / 0.15 mm	0.016 in / 0.406 mm	0.016 in / 0.406 mm	0.007 in / 0.15 mm
Technology	Resistive			
Resolution	25 sensels™ per in <sup>2</sup> / 3.9 per cm <sup>2</sup>			
Pressure Range	50-75 PSI / 345-517 kPa (sensitive) to 125 PSI / 862 kPa (standard)			

Note: All sensors should last approximately 5-15 trials, depending on the application. (This assumes more vigorous usage for the Sport sensor, such as running, jumping, etc.)

### SYSTEM

	Base (tethered)	Wireless	Datalogger
Electronics Included(1),(2)	VersaTek® Cuffs (2), VersaTek 2-Port Hub	VersaTek Cuffs (2), 1 VersaTek Wireless Unit	VersaTek Cuffs (2), 1 VersaTek Datalogger Unit
Scan Rates(3)	Up to 750 Hz	Up to 100 Hz	Up to 600 Hz
Maximum distance from PC	Up to 25 ft / 7.62 M	Up to 328 ft / 100 M	Unlimited
Connection	USB	Wi-Fi	Upload via USB
Power	0.35 A 100 - 200 VAC 50 - 60 cycles	Li-Ion Battery 8V / 2400 mA-Hr	

(1) The F-Scan Wireless/Datalogger system includes 2 VersaTek Cuffs and 1 Wireless/Datalogger unit with both Wi-Fi capability and memory stick.

(2) Standard CAT5E cables connect the Cuff to the Wireless/Datalogger Unit.

(3) Scan rates when using XL Sensors are 529 Hz (tethered), 58 Hz (Wireless), and 446 Hz (Datalogger).

### WIRELESS/DATALOGGER UNIT

Size	4.20 x 3.75 x 1.50 in. / 107 x 95 x 38 mm
Weight	11.4 oz / 322 g (with belt & battery)
Battery life	Up to 2 hours recording



Tekscan, Inc.  
307 West First Street, South Boston, MA 02127  
Phone 617.464.4500 Toll Free 800.248.3669 Fax 617.464.4266  
marketing@tekscan.com www.tekscan.com

# F-SCAN IN-SHOE ANALYSIS SYSTEM (CONTINUED)

Tekscan's advanced, proprietary *F-Scan* software helps you analyze your data in a variety of ways. The software is available in two versions - Clinical (base) and Research. Research software is an optional upgrade that provides additional capabilities and functionality for an additional cost.

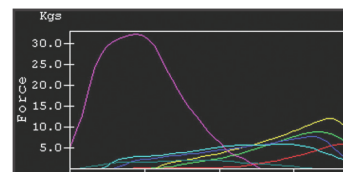
SOFTWARE		
	Clinical (base)	Research
NEW – Automated Peak Pressure Analysis with Report	X	X
NEW – Automated 3Box Analysis with Report (foot segmentation)	X	X
Pressure profiles (visual pressure distribution)	X	X
Force vs. Time Graphs	X	X
Patient Database	X	X
Side-by-side comparison for pre- and post- recordings	X	X
Export recordings as an AVI file	X	X
External triggering and data synch		X
Export data as an ASCII file		X
View and graph data as an integrated MS Excel table		X
Delayed Recordings		X
Support 2 Wireless/Datalogger Units		X
Additional calibration points		X
Multi-point equilibration		X

All Tekscan software operates on MS Windows XP, Vista, Windows 7, and Windows 8.

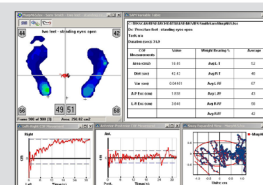
## Optional Add-Ons

### SOFTWARE

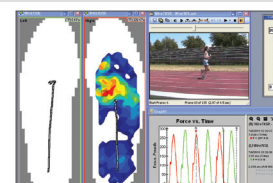
**Timing Analysis Module (TAM)** provides timing parameters for more extensive gait analysis



**Sway Analysis Module (SAM)** for evaluating balance and sway

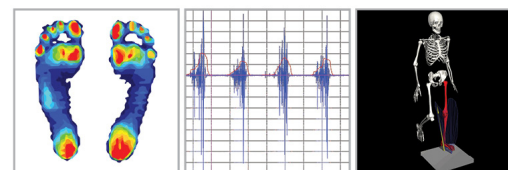


**Video Synch** facilitates synchronization with basic video for coordinated playback



### HARDWARE

**Trigger Transmitter & Trigger Receiver** provide remote triggering capabilities for Wireless and Datalogger systems



Tekscan, Inc.  
 307 West First Street, South Boston, MA 02127  
 Phone 617.464.4500 Toll Free 800.248.3669 Fax 617.464.4266  
 marketing@tekscan.com www.tekscan.com